

# Proposal for Emoji: LUNG

**Submitted by:** Christian Kamkoff, Shuhan He MD, Melissa Thermidor

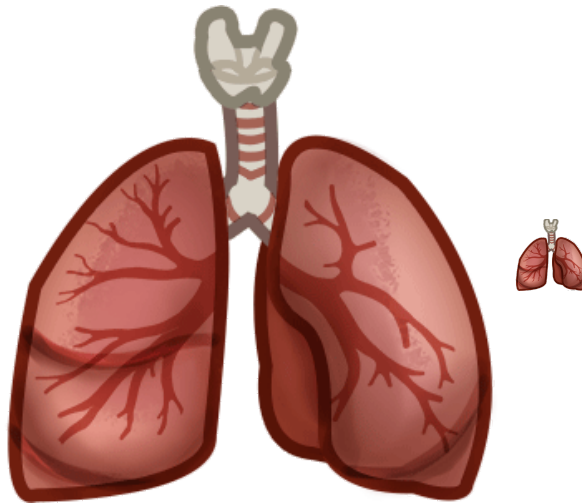
**Date:** March 30th 2019

**Emoji Name:** LUNG

**Sort Order:** in the BODY PARTS category, after BRAIN

**Reference Emoji:** GOBLIN

**Keywords:** breath, inhalation, exhalation, respiration



*Credit: Anna Zeng. Free for use in conjunction with this proposal*

## Abstract

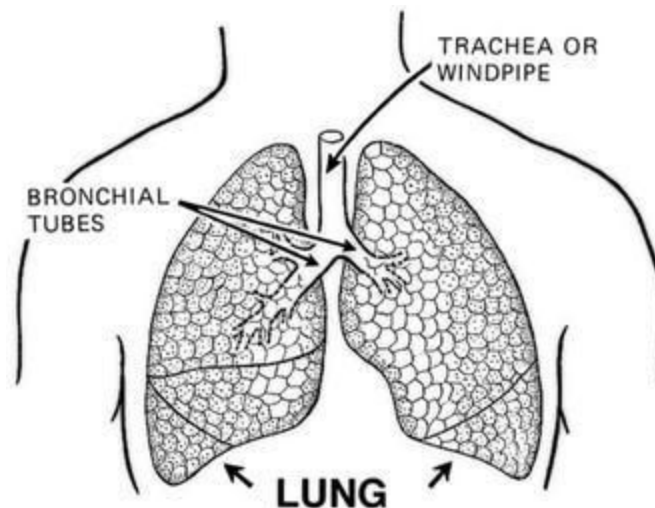
This proposal requests the addition of a LUNG emoji. The LUNG, along with the BRAIN and HEART, is one of the most iconic organs in the body. Essential to the respiratory process, the LUNG is significant to discussions of health, air quality, and one of the most universal and basic biological functions: breathing. The current absence of the LUNG is a notable gap in the BODY PART category, and if it were added, frequent and widespread usage would be expected.

# Introduction

With more than 59 million global healthcare professionals and countless people affected by respiratory diseases—whether personally, through acquaintances, or through a family member—the LUNG emoji would be a valuable addition to discussions of health.

Every year, more than 2 million cases of lung cancer are diagnosed. Of all forms of cancer—one of the world's leading causes of death—lung cancer kills the greatest number of people each year, claiming the lives of 1.8 million in 2018. In addition to lung cancer, respiratory diseases impact the lives of hundreds of millions of people across the world. Approximately 334 million people have an asthmatic condition, and the chronic disease affects 14% of children globally. Dyspnea, or shortness of breath, is a common complaint among emergency department patients and accounted for 3.7 million visits (2.7%) of the more than 136 million emergency department visits to United States in 2015. Sixty-five million people are afflicted with chronic obstructive pulmonary disease (COPD), a condition responsible for an estimated 3 million deaths annually. Millions more die each year from, tuberculosis and pneumonia, a leading cause of death for children under 5.

The addition of the LUNG emoji would facilitate communication between patients and healthcare professionals by representing one of the body's more complex systems with a single character. This would encourage increased awareness of risk factors, symptoms, and the impact on the lives of those affected by respiratory health issues through more accessible discussions and expressions of medical topics related to the lungs.



In humans, as well as in all mammals and most vertebrates, the lung is the primary organ of the body's respiratory system, performing the vital function of exchanging oxygen and carbon dioxide between the bloodstream and the atmosphere. Like most other animals, humans have two lungs, located in the chest. The human lungs contains over 1,500 miles of airways and have a surface area the size of a tennis court. With an average of a 6 liter capacity, the lungs take in

approximately 2,000 gallons of air per day to oxygenate about the same volume of blood as it is pumped through the heart. Through cycles of inhalation and exhalation of air, the lungs accomplish the process of breathing and makes speech possible via airflow across the vocal cords.

Because our lungs allow us to breathe, the LUNG can also be used to represent the BREATH, which, due to its role as a vital biological function, is significant to spiritual practices throughout the world. The breath is the object of focus in many forms of meditation and prayer due to its constant presence and cyclical nature. Symbolically, the breath is often synonymous with life.

According to the 2018 State of Global Air Report, 95% of the world's population lives in areas where air pollutant particles exceed the World Health Organization's recommended guideline. In 2016 roughly 8 million deaths were attributed to this risk factor. There are more than 3 billion people exposed to indoor toxic smoke and outdoor pollutant air, with another billion exposed to tobacco smoke. Air quality is a particular problem in developing nations, where rapid and unregulated economic expansion favors the consumption of the most environmentally damaging fossil fuels. These pollutants have long term impacts on the lung as the organ that intakes air from the atmosphere. The LUNG emoji would be a valuable tool in communication about environmental air quality around the world.

## Selection Factors – Inclusion

### Compatibility

Not applicable.

### Expected Usage Level

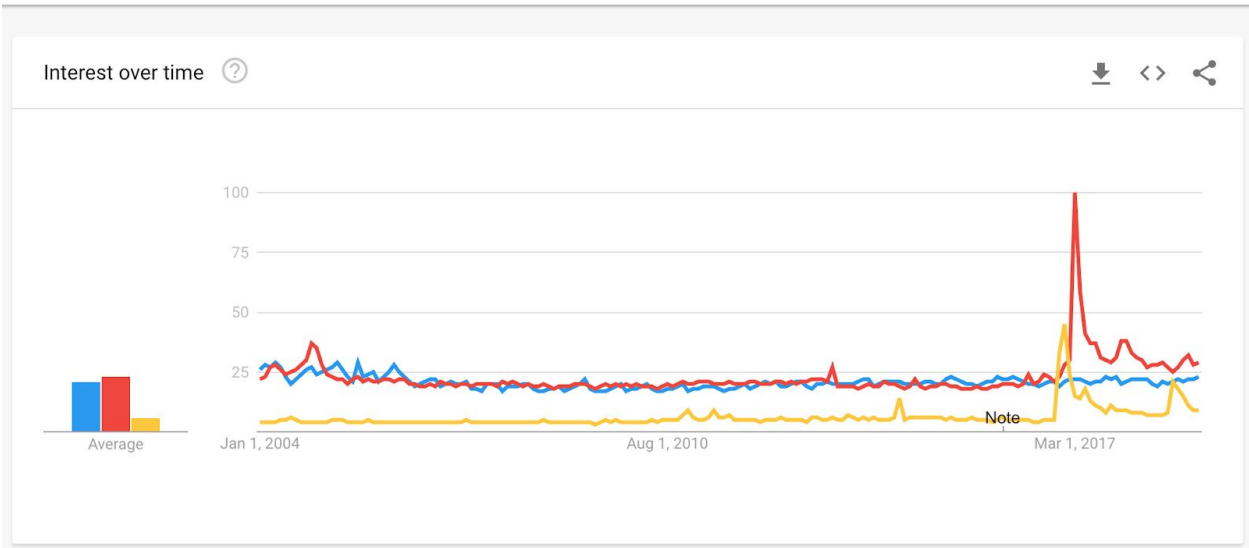
#### Frequency

The expected usage of the LUNG emoji is high. GOBLIN has been chosen as a distinct emoji of median popularity for comparison in the data below. LUNG can be seen to hold more interest over time than GOBLIN across popular search engines, in publications, and in searches for visual media. BREATH has also been included in the comparison as a relevant term for representation by the LUNG emoji.

## Google Trends: Web Search

● **lung** Search term    ● **breath** Search term    ● **goblin** Search term    +

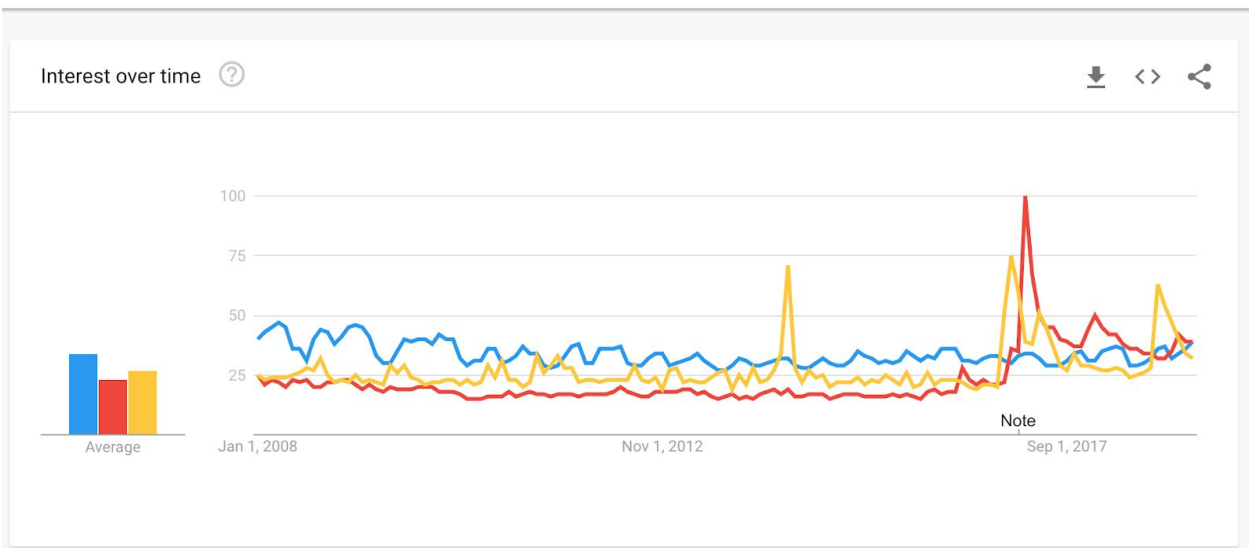
Worldwide ▾    2004 - present ▾    All categories ▾    Web Search ▾



## Google Trends: Image Search

● **lung** Search term    ● **breath** Search term    ● **goblin** Search term    +

Worldwide ▾    2008 - present ▾    All categories ▾    Image Search ▾

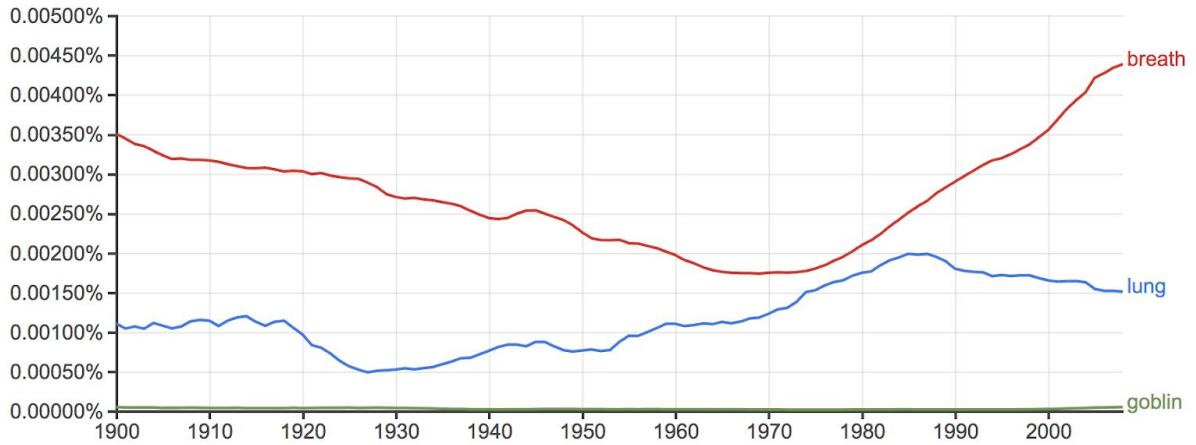


## NGram Viewer

# Google Books Ngram Viewer

Graph these comma-separated phrases:   case-insensitive

between  and  from the corpus  with smoothing of  [Search lots of books](#)



## Google Search



[All](#) [Images](#) [News](#) [Videos](#)

About 339,000,000 results (0.82 seconds)



[All](#) [Videos](#) [Images](#) [News](#)

About 613,000,000 results (0.69 seconds)



[All](#) [Images](#) [Videos](#) [News](#)

About 102,000,000 results (0.86 seconds)

## YouTube Search



lung site:https://www.youtube.com/

All Images News **Videos** Bo

About 12,200,000 results (0.76 seconds)



breath site:https://www.youtube.com/

All **Videos** Images News Bo

About 101,000,000 results (0.50 seconds)



goblin site:https://www.youtube.com/

All Images **Videos** News Sho

About 10,500,000 results (0.40 seconds)

## Bing Search



lung

**All** Images Videos

30,300,000 Results Any time ▾



breath

**All** Images Videos

20,400,000 Results Any time ▾

goblin - Bing goblin

**All** Images Videos

20,400,000 Results Any time ▾

## Multiple Usages

In addition to direct representation of the physical organ, the LUNG emoji can be used to represent concepts relating to air and the breath:

- An “iron lung” refers to an impressive lung capacity, usually in the context of exercise
- "Take a deep breath"
- “At the top of your lungs”
- “Coughing up a lung” refers to violent coughing
- “Catch your breath”
- “A breath of fresh air”

## Use in sequences

Some of the many possible Sequences would be:

- BLACK SQUARE/CIRCLE + LUNG → BLACK LUNG
- PERSON RUNNING/BIKING/SWIMMING + LUNG → AEROBIC EXERCISE
- WIND FACE + LUNG → BLOWHARD
- TOP ARROW + LUNG → TOP OF YOUR LUNGS
- FACE WITH HAND OVER MOUTH + LUNG → HOLDING YOUR BREATH
- PENCIL + LUNG → DRAW BREATH

## Breaking new ground

No.

## Image Distinctiveness

Although the LUNG has an unusual appearance and lacks the cute appeal of many emoji because it is an internal organ, it is an iconic image that is universally recognizable due to its essential role in human existence. There are no existing emoji that resemble the LUNG’s form or could be mistaken for the LUNG.

## Completeness

The LUNG helps complete the category of BODY PARTS as an essential organ in the body. No existing emoji adequately represent its form or function, nor do any convey its connotations relating to the universal biological process of breathing.

## Frequently Requested

The demand for the LUNG emoji can best be demonstrated by the frequent requests over the years on Twitter which illustrate the multiplicity of its uses and its utility to healthcare professionals, individuals with respiratory conditions, and a general audience.

 **narp.** @emcarxx · 20 Mar 2017  
How do we not have a **lung emoji**


 **K. Luv** 🌞 @kaytaymichelle\_ · 7 Apr 2014  
Replying to @jennagangi\_  
@jennagangi\_ \*inserts **lung emoji**\*

   1

 **YES JES** @omgitsjmillis · 22 Dec 2016  
❤️ but where is the black **lung emoji**

   1


 **Jason Whitaker** @jdwhit26 · 25 Jun 2018  
Why is there no iron **lung emoji**?

 **.FPE.** @cowardtyler · Mar 27  
couldnt find a **lung emoji** I am disappointed

 **Nicole Polara** @nicolepolara · 8 May 2014  
coughing up a **lung \*emoji** choking herself\* 🤮

 1   2

 **Zach Lipkin-Moore** @zachandslash · 10 Sep 2017  
Why isn't there a **lung emoji**? 🙄

 1   2

 **Olivia O'Sullivan** @oliviaosullivan · Mar 6  
Breathing in, breathing out and blogging again here: [myanomalyanomaly.com](http://myanomalyanomaly.com)  
👤🗺️ (still no **lung emoji** 🗨️)



The Tweets below highlight the need for the LUNG emoji in the context of those with respiratory disorders and those connected to them.



**Emma Johnson** @emmajohnson426 · 4 Jul 2018  
There's no **lung emoji** which makes me sad having CF

1 1 6

[Show this thread](#)



**claire wineland** @clairewineland · 29 May 2018  
It's a YES!!!! I am officially on the #UCSD transplant list! Woohoo!  
#CFAwareness #cysticfibrosis #lungtransplant It's ON!



75 61 866



**Teagan Wall, PhD** ✓  
@TeagWall

[Follow](#)

Replying to @clairewineland

Congratulations! I'm sending you good thoughts. Also, there should really be a lung emoji. ❤️❤️



**omar apollo's roach** @1999CATHEAVEN · 24 Dec 2018  
WHY IS THERE NO **LUNG EMOJI** HOW AM I SUPPOSED TO MAKE FUN OF MY FRIEND WITH ASTHMA

1 1 15



# Selection Factors – Exclusion

## Overly Specific

The LUNG is not overly specific as it is an organ universal to all humans and to many other animals.

## Open Ended

The LUNG is not only part of the body, but one of its most important organs. Through its role in the breath, it will be valuable in the context a wide range of ideas, satisfying an existing gap in representation rather than leading to the necessity of new emoji.

## Already Representable

The LUNG is a particularly significant organ in the body and cannot be represented by any existing BODY PARTS. Relating to the LUNG's representation of the breath, WIND FACE and DASHING AWAY can only at best be used in reference to exhalation, and even then would be more adequately contextualized in sequence with the LUNG. The LUNG further encompasses inhalation and all concepts of air relating to the body.

## Logos, brands, UI icons, signage, specific people, deities

The LUNG represents no logos, brands, icons, signage, deities, or specific people.

## Transient

The LUNG is an essential organ in the human body and can thus expect stable, long-term usage. Because the LUNG can be used representatively for both healthy breathing and for respiratory diseases, it will continue to have a place in its relation to health. As global education on the necessity of clean air and the problems of air pollution increases, the LUNG will remain essential to discussions of these topics.

## Faulty Comparison

This proposal for the LUNG emoji is submitted on its own merits with no argument made due to inclusion of existing emoji.

## Exact Images

The LUNG conforms to a general shape and color, but does not require an overly specific representation.

## Other Character Properties

The other character properties are suggested to be defined as follows.

General Category: So  
Canonical Combining Class: 0  
Bidirectional Class: ON  
Decomposition Type:  
Decomposition Mapping:  
Numeric Type:  
Numeric Value:  
Bidirectional Mirrored:  
N Unicode 1 Name:  
ISO Comment:  
Simple Uppercase Mapping:  
Simple Lowercase Mapping:  
Simple Titlecase Mapping:

## Author Bios

**Christian Kamkoff** ([ckamkoff@gmail.com](mailto:ckamkoff@gmail.com)) is an MFA candidate in Creative Writing at Columbia University. He grew up in the Pacific Northwest, where his lungs got plenty of clean air.

**Shuhan He MD** ([shuhan.he1@gmail.com](mailto:shuhan.he1@gmail.com)) is a MD physician at the Massachusetts General Hospital in the department of Emergency Medicine. He is the Associate Director for the Center for Innovation and Digital Health and the Director of Growth for the Strategic Alliance Initiative. He serves as a Digital and Equality Health Fellow and researches neurological emergencies, digital implementations of technologies and efficient usage of digital tools in medicine.

**Melissa Thermidor** ([thermidor.melissa@gmail.com](mailto:thermidor.melissa@gmail.com)) is the Social Media Lead at NHS Blood and Transplant, where she advocates for individuals to give blood and join the Organ Donor Register to help save and improve lives.