

**Title:** Proposal to encode LATIN SMALL LIGATURE VE  
**Action:** For consideration by UTC and ISO/IEC  
**Author:** Erol Çitci  
**Date:** 09-May-2022

## Introduction

Despite the fact that the “&” sign is not a Turkish Latin character, it is widely used in Turkey in place of the conjunction "ve" (which means “and” in Turkish) in shop signs, logos or headlines due to its aesthetic form. There are many authorities (Ersoylu, 2009; Sarıkavak, 2006; Şenel and Karaçalı 2019) who do not approve of the use of a ligature that expresses the Latin word "et" in Turkish texts.

Some Turkish typographers such as Prof. Namık Kemal Sarıkavak and Halis Biçer drew "ve" ligatures that would be more suitable for Turkish instead of the "&" sign. Font designer Ahmet Altun adapted some of these “ve” ligatures to Halis Rounded, Halis Grotesk and İzmir Typeface. However, these adaptations, which attracted attention in the beginning, still did not become widespread. And this is mainly due to the fact that the “ve” ligature has not a separated encoding. Therefore, the "ve" ligature is used as an alternate glyph from the & sign in the font sets (See Figure 8).

This document proposes the "ve" character to be included in Unicode.

## Requests

The author wants the "ve" symbol to be coded instead of the "&" sign, which is frequently used in Turkey. Code position U+FB07 is proposed for the encoding.

## Character Properties


Shape	Character Combining	Proposed Encoding	Name
	v + e 0076 0065	U+FB07	LATIN SMALL LIGATURE VE

Table 1

# Figures

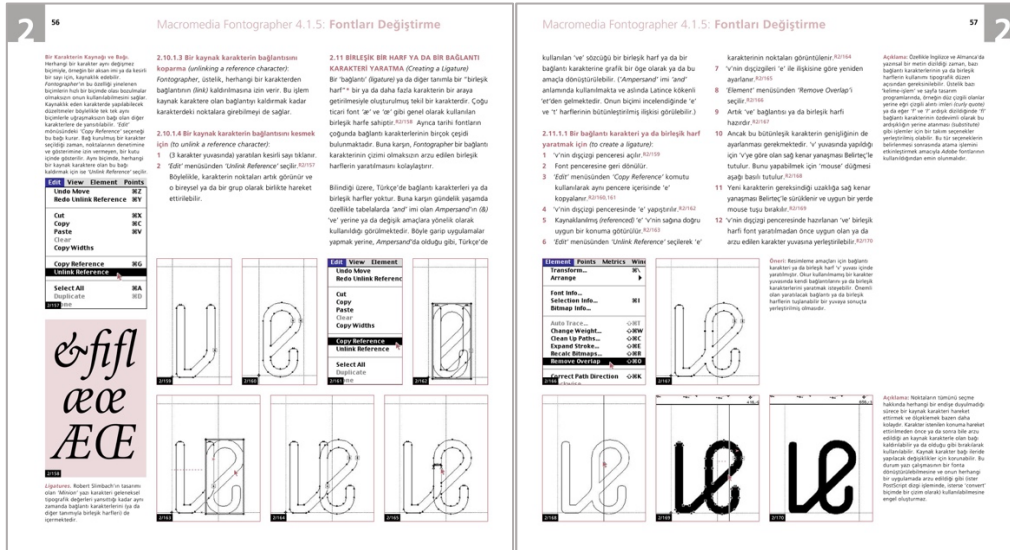


Figure 1: The “ve” ligature in the “Sayısal Tipografi” book (Sarıkavak, 2006).

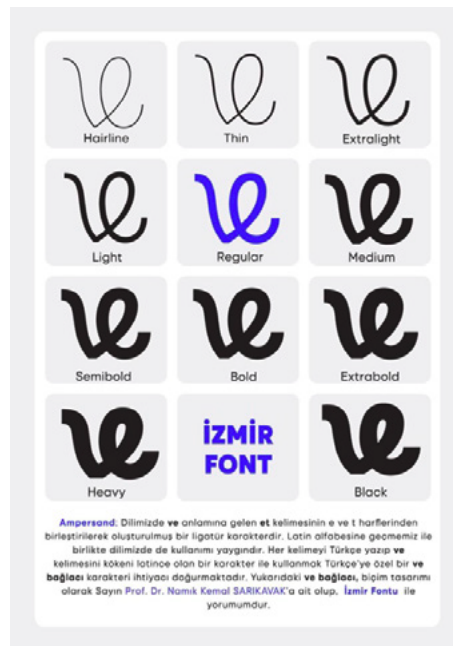


Figure 2: Adaptation of Sarıkavak’s “ve” ligature to İzmir font by Ahmet Altun, 2020.



**Figure 3:** İzmir Type Specimen by Ahmet Altun.



**Figure 4:** 3D “ve” ligature from the İzmir typeface promotion gala.



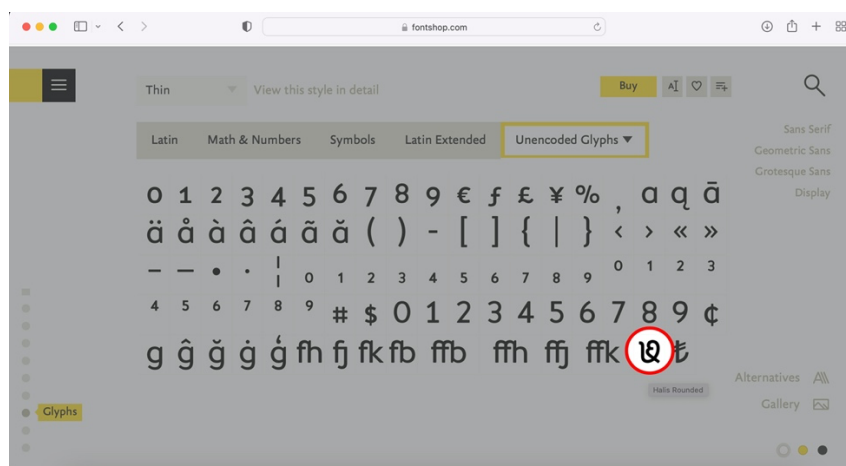
**Figure 5:** “ve” ligatur from the İzmir typeface promotion gala.



**Figure 6:** Sketches of Halis Biçer for the "and" ligature.



**Figure 7:** Adaptation of Halis Biçer's "ve" ligature by Ahmet Altun to Eomon typeface, Turkish Typography Society, 2012



**Figure 8:** Halis Biçer's "ve" ligature in the glyph set from Halis Rounded typeface

## References

1. AKIN, F. K. (2016), “&, vesaire, etc.”, <https://medium.com/kelime/vesaire-etc-b455119f6cd1>
2. ÇİTÇİ, E. (2020) “The Use of Ampersand Character in Turkish and a Suggestion for Adaptation,” Troy International Journal of Art and Design, vol. 1, no. 1, p. 28–43.
3. ERSOYLU, H. (2009). Studies on contemporary problems of Turkey Turkish. Istanbul, Otuken Publications.
4. SARIKAVAK, N. K. (2006), Digital Typography 3; Digital Font Design Programs and Digital Font Designs, Unpublished Book.
5. SENEL, M. and KARAÇALI, Z. (2019). Can We Find the & Sign in Turkish?, 10th International World Language Turkish Symposium Proceedings, p. 1500-1505.
6. “İzmir Font Ready to Use “, <https://www.izmirvakfi.org/izmir-fontu-kullanima-hazir>
7. Mediacat, “İzmirin Artık Bir Fontu Var”, <https://mediacat.com/izmir-vakfi-izmir-fontu-tanitimi/>, Acces: 2022

## Figure References

Figure 1:

<https://www.facebook.com/photo?fbid=3232503056813610&set=pcb.3232509940146255>, Acces: 2022.

Figure 2: <http://ahmetaltuntype.com/blog/ve-baglaci.html>, Acces: 2020.

Figure 3: İzmir Fontu, <https://bigumigu.com/haber/izmire-ozel-font-izmir-fontu/>, Acces: 2022.

Figure 4:

<https://www.facebook.com/photo.php?fbid=10221234785633989&set=t.584387979&type=3>, Acces: 2022.

Figure 5: <https://www.izgazete.net/belediye/izmir-fontu-kullanima-hazir-dunya-izmiri-daha-dayakindan-taniyacak-h52011.html>, Acces: 2022.

Figure 6: From Halis Biçer’s own collection.

Figure 7: <https://www.facebook.com/tipografi/photos/girisimlerimiz-sonuc-verdi-yazitipi-tasarimcisi-ahmet-altun-uzerinde-calistiği-f/474031359315910/>, Acces: 2022

Figure 8: Halis Rounded Typface, <https://www.fontshop.com/families/halis-rounded#glyphs>, Acces: 2022.

**PROPOSAL SUMMARY FORM TO ACCOMPANY SUBMISSIONS  
FOR ADDITIONS TO THE REPERTOIRE OF ISO/IEC 10646<sup>1</sup>.**

**Please fill all the sections A, B and C below.**

Please read Principles and Procedures Document (P & P) from <http://std.dkuug.dk/JTC1/SC2/WG2/docs/principles.html> for guidelines and details before filling this form.

Please ensure you are using the latest Form from <http://std.dkuug.dk/JTC1/SC2/WG2/docs/summaryform.html>.

See also <http://std.dkuug.dk/JTC1/SC2/WG2/docs/roadmaps.html> for latest Roadmaps.

**A. Administrative**

1. Title:	<i>Proposal to encode LATIN SMALL LIGATURE VE</i>
2. Requester's name:	<i>Erol Çitci</i>
3. Requester type (Member body/Liaison/Individual contribution):	<i>Individual contribution</i>
4. Submission date:	
5. Requester's reference (if applicable):	
6. Choose one of the following:	
This is a complete proposal:	<i>Yes</i>
(or) More information will be provided later:	

**B. Technical – General**

1. Choose one of the following:		
a. This proposal is for a new script (set of characters):	<i>No</i>	
Proposed name of script:		
b. The proposal is for addition of character(s) to an existing block:	<i>Yes</i>	
Name of the existing block:	<i>Latin Ligatures</i>	
2. Number of characters in proposal:	<i>1 (one)</i>	
3. Proposed category (select one from below - see section 2.2 of P&P document):		
A-Contemporary <input checked="" type="checkbox"/>	B.1-Specialized (small collection) <input type="checkbox"/>	B.2-Specialized (large collection) <input type="checkbox"/>
C-Major extinct <input type="checkbox"/>	D-Attested extinct <input type="checkbox"/>	E-Minor extinct <input type="checkbox"/>
F-Archaic Hieroglyphic or Ideographic <input type="checkbox"/>	G-Obscure or questionable usage symbols <input type="checkbox"/>	
4. Is a repertoire including character names provided?	<i>Yes</i>	
a. If YES, are the names in accordance with the "character naming guidelines" in Annex L of P&P document?	<i>Yes</i>	
b. Are the character shapes attached in a legible form suitable for review?	<i>Yes</i>	
5. Fonts related:		
a. Who will provide the appropriate computerized font to the Project Editor of 10646 for publishing the standard?	<i>Erol ÇITCI</i>	
b. Identify the party granting a license for use of the font by the editors (include address, e-mail, ftp-site, etc.):	<i>Burdur Mehmet Akif Ersoy University – Turkey / ecitci@mehmetakif.edu.tr</i>	
6. References:		
a. Are references (to other character sets, dictionaries, descriptive texts etc.) provided?	<i>Yes</i>	
b. Are published examples of use (such as samples from newspapers, magazines, or other sources) of proposed characters attached?	<i>Yes</i>	
7. Special encoding issues:		
Does the proposal address other aspects of character data processing (if applicable) such as input, presentation, sorting, searching, indexing, transliteration etc. (if yes please enclose information)?	<i>No</i>	

**8. Additional Information:**

Submitters are invited to provide any additional information about Properties of the proposed Character(s) or Script that will assist in correct understanding of and correct linguistic processing of the proposed character(s) or script. Examples of such properties are: Casing information, Numeric information, Currency information, Display behaviour information such as line breaks, widths etc., Combining behaviour, Spacing behaviour, Directional behaviour, Default Collation behaviour, relevance in Mark Up contexts, Compatibility equivalence and other Unicode normalization related information. See the Unicode standard at <http://www.unicode.org> for such information on other scripts. Also see Unicode Character Database ( <http://www.unicode.org/reports/tr44/> ) and associated Unicode Technical Reports for information needed for consideration by the Unicode Technical Committee for inclusion in the Unicode Standard.

<sup>1</sup> Form number: N4502-F (Original 1994-10-14; Revised 1995-01, 1995-04, 1996-04, 1996-08, 1999-03, 2001-05, 2001-09, 2003-11, 2005-01, 2005-09, 2005-10, 2007-03, 2008-05, 2009-11, 2011-03, 2012-01)

### C. Technical - Justification

1. Has this proposal for addition of character(s) been submitted before? If YES explain	No
2. Has contact been made to members of the user community (for example: National Body, user groups of the script or characters, other experts, etc.)? If YES, with whom? If YES, available relevant documents:	No
3. Information on the user community for the proposed characters (for example: size, demographics, information technology use, or publishing use) is included? Reference:	No
4. The context of use for the proposed characters (type of use; common or rare) Reference:	Rare
5. Are the proposed characters in current use by the user community? If YES, where? Reference:	No
6. After giving due considerations to the principles in the P&P document must the proposed characters be entirely in the BMP? If YES, is a rationale provided? If YES, reference:	Yes Yes <i>The character could be kept with other ligatures.</i>
7. Should the proposed characters be kept together in a contiguous range (rather than being scattered)?	No
8. Can any of the proposed characters be considered a presentation form of an existing character or character sequence? If YES, is a rationale for its inclusion provided? If YES, reference:	No
9. Can any of the proposed characters be encoded using a composed character sequence of either existing characters or other proposed characters? If YES, is a rationale for its inclusion provided? If YES, reference:	No
10. Can any of the proposed character(s) be considered to be similar (in appearance or function) to, or could be confused with, an existing character? If YES, is a rationale for its inclusion provided? If YES, reference:	No
11. Does the proposal include use of combining characters and/or use of composite sequences? If YES, is a rationale for such use provided? If YES, reference: Is a list of composite sequences and their corresponding glyph images (graphic symbols) provided? If YES, reference:	Combining Yes <i>The character combining is as can be seen in sample.</i> Yes <i>The character combining is as can be seen in sample.</i>
12. Does the proposal contain characters with any special properties such as control function or similar semantics? If YES, describe in detail (include attachment if necessary)	No
13. Does the proposal contain any Ideographic compatibility characters? If YES, are the equivalent corresponding unified ideographic characters identified? If YES, reference:	No