

Japan is proposing six CJK Ideographs for addition to UCS as summarized in IRG N1347R (the same document will be submitted as WG2 N3318R). This document supplies additional information on the proposed six ideographs and the recommendations we made to IRG.

### Proposed character in IRG N1347R

Source ID: J\_ARIB-754F

Glyph	ARIB ID	IDS	Code position in FPDAM5
梁	47	𪛗 𪛘 𪛙 𪛚 刃 木	U+9FC4

#### Additional Information

KXI: 0526.211

Radical: 木(2F4A)

Stroke: 6

1<sup>st</sup> seq: 4

#### Reading

- Japanese On: ryō
- Japanese Kun: HASHI

#### Related characters in existing UCS

Glyph	ucs	kxi	radical	stroke	firstseq
C T J K					
梁 梁 梁 梁	U+6881	0528.010	木	7	4

#### Reading

- Japanese On: ryō, rō
- Japanese Kun: UTSUBARI, HASHI, HARI, YANA
- kMandarin: LIANG2

#### Meaning

- kDefinition: bridge; beam; rafters; surname

#### Related characters in IRG working projects

Project name: CJK-D

03858	梁			
				KP1-4B50
木				
6	4	0526.211	TC-4A76	

Reading

- IRG N1232 (TCA) liang

#### Annex S information

➤ 刃 vs 办

The two characters shown above are non-cognate and therefore non-unifiable, but Annex S indicates that a pair of CJK ideographs might be cognate when the only difference of actual shape is the component shown above.

𠂔 𠂔  
524F 5259

An example in S.3 (Source code separation exception).

The following are related pairs coded separately in UCS and there's no single instance of unification example with this pattern in the standard.

𠂔	𠂔	𠂔	梁	紉	飴	𠂔
U+08842	U+206DD	U+25C4B	U+25E6D	U+07D09	U+207B4	U+22737
𠂔	𠂔	𠂔	梁	紉	飴	𠂔
U+04610	U+0523	U+07C17	U+07CB1	U+25FA0	U+207D0	U+227A4

#### Other Information

The exact match of the proposed character was found in the IVD submitted by Adobe, which was under public review.

6881 梁 梁  
V517-3978 V518-14089

6881 E0101; Adobe-Japan1; CID+14089

See <http://www.unicode.org/ivd/pri/pri108/pri108-partialcharts.pdf> for more detail.

### Recommendation to IRG

Propose this character to CJK Unified Ideographs. Annex S decides two ideographs to be unified only when they're cognate and considered to have the same abstract shape. S.3, known as the list of selected source code separation exceptions, has been used as a reference for unification judgment, but as the IRG plans to clarify what S.3 really means in the working revision of Annex S, inclusion in the list does not imply that those pairs or triplets should have been unified or disunified if it had not been for the source code separation rule.

The available information on the proposed character and the character coded at U+6881 indicates they're cognate, but they should be considered different abstract shape as the separation of all existing examples supports.

---

### **Proposed character in IRG N1347R**

Source ID: J\_ARIB-7621

Glyph	ARIB ID	IDS	Code position in FPDAM5
𐰇	95	𐰇 𐰇 𐰇	U+9FC5

### Additional Information

KXI: 0447.141

Radical: 示(2F70)

Stroke: 13

1<sup>st</sup> seq: 1

Reading rei

### Related characters in existing UCS

None.

### Related characters in IRG working projects

None.

### Annex S information

This is a character never encoded. We believe there's no possibly unifiable character in UCS.

### Other information

ARIB#95 is the same actual shape with MOJIKYO@86652 which is classified as a

character used for names. TRON character set contains the character with two variations, the same form with ARIB#95 and the one with the traditional form of radical ‘spirit’, and it classifies them as KOKUJI.

### Recommendation to IRG

Propose this character to CJK Unified Ideographs. The alleged unification with U+4665

(𦵑 radical ‘clothes’) is not accepted because of the difference in the radical which is the fundamental component to distinguish a character from others with the same phonetic component.

### **Proposed character in IRG N1347R**

Source ID: J\_ARIB-7547

Glyph	ARIB ID	Compatibility equivalence	IDS	Code position in FPDAM5
恵	39	U+06075 恵	<div>𦵑 恵、</div> <div>or 𦵑 甫心</div>	FA6B

### Additional Information

KXI: 0388.341

Radical: 心(2F3C)

Stroke: 7

1<sup>st</sup> seq: 1

Reading

- Japanese On: e, kei
- Japanese Kun: MEGUMI, MEGUMU

### Related characters in existing UCS

Glyph	ucs	kxi	radical	stroke	firstseq
C T J K					
恵 恵 恵 恵	U+6075	0386.161	心	6	1

Reading

- Japanese On: kei, e

- Japanese Kun: MEGUMU, MEGUMI
- kMandarin HUI4

Meaning

- kDefinition favor, benefit, confer kindness

### Annex S information

Annex S indicates that two ideographs only differ from each other by a dot or a single insignificant stroke can be subject to unification when the extra or omitted dot / stroke doesn't contribute to the difference in their abstract shape and therefore recognized as a difference of writing style of the same ideograph.

刹刹	T	拔拔	TJ	达达	T
5239 524E		629C 62D4		8FBE 8FD6	
奥奥	J	檝檝	T	馱馱	TJK
5965 5967		699D 6A27		99B1 99C4	
寬寬	T	皞皞	T	飮飮	T
5BDB 5BEC		76A1 76A5		9AA9 9AAB	
弑弑	T	粵粵	T	髮髮	TJ
5F11 5F12		7CA4 7CB5		9AEA 9AEE	
徵徵	T	緒緒	T	鳳鳳	T
5FB4 5FB5		7DD2 7DD6		9CEF 9CF3	
戾戾	T	翱翱	T		
623B 623E		7FF6 7FFA			


Examples from S.3 (Source code separation exception).

### Recommendation to IRG

Propose this character to CJK Compatibility Ideographs with the identified CJK unified ideograph as its equivalent character. The available information on the proposed character and U+6075 indicates that they are cognate.

## Proposed character in IRG N1347R

Source ID: J\_ARIB-7563

Glyph	ARIB ID	Compatibility equivalence	IDS	Code position in FPDAM5
熙	67	U+242EE 熙		U+FA6C

### Additional Information

KXI: 0678.161

Radical: 火(2F55)


Stroke: 9

1<sup>st</sup> seq: 1


### Reading

- Japanese On: i, ki
- Japanese Kun: HIROI, YOROKOBU, TANOSHIMU, HIKARU

### Related characters in existing UCS

<b>242EE</b> 28737 28737 <b>0678.161</b> 32220.120 火 9	G_HZ	
--	------	---

Meaning a variant form of 熙 U+ 7199 (HYD 32220.120)

<b>07199</b> 28767 28767 <b>0678.161</b> 32226.060 火 10	G0-4E75 T1-695A J0-7426 K0-7D77 V1-5E36 KP0-F6AB	
---	---	---

### Reading

- Japanese On: i, ki
- Japanese Kun: HIROI, YOROKOBU, HIKARU
- kMandarin XI1 YI2

### Meaning

- kDefinition bright, splendid, glorious

07155 28632 28632 0676.170 32220.131 火 9	GE-317E  J0-5F66 K2-4466	熙
--	-----------------------------------	---

Reading

- Japanese On: i, ki
- Japanese Kun: HIROI, YOROKOBU, TANOSHIMU, HIKARU

Meaning KangXi style of U+7199.

Related characters in IRG working projects

(Not found)

Annex S information

➤ 巳 vs 己

Annex S indicates that a pair of CJK ideographs might be cognate when the only difference of actual shape is the component shown above.

包・包

Example in S.1.5 (different actual shapes representing the same abstract shape)

Glyph					ucs
C	T	J	K		
包	包	包	包		U+5305

Glyph					ucs
C	T	J	K		
巷	巷	巷	巷		U+5DF7

Glyph					ucs
C	T	J	K		

巽 巽 巽 巽 U+5DFD

Glyph UCS  
C T J K

昇 昇 昇 n/a U+5F02

Glyph UCS  
C T J K

起 起 起 起 U+8D77

Note that there're also pairs of disunification examples.

The ideographs shown below are separately encoded because they're non-cognate.

U+572E U+572F

圮 圮

### Recommendation to IRG

Propose this character to CJK Compatibility Ideographs with the identified CJK unified ideograph as its equivalent character.

---

### Proposed character in IRG N1347R

Source ID: J\_ARIB-757D

Glyph	ARIB ID	Compatibility equivalence	IDS	Code position in FPDAM5
袂	93	U+07953 袂	𑖓 𑖔 友	U+FA6D

### Additional Information

KXI: 0841.031

Radical: 示(2F70)

Stroke: 4

1<sup>st</sup> seq: 1

Reading

➤ Japanese On: yū



- Japanese Kun: HARAI, HARAU

#### Related characters in existing UCS

Glyph	ucs	kxi	radical	stroke	firstseq
C T J K					
祓 祓 祓 祓	U+7953	0841.120	示	5	1

#### Reading

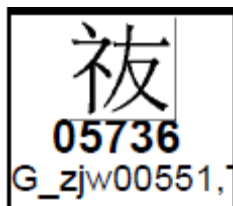
- JapaneseOn: futsu, hai, fuchi, he, bai
- JapaneseKun: HARAI, HARAU
- kMandarin: FU2 FEI4

#### Meaning

- kDefinition: exorcise, remove evil; clean

#### Related characters in IRG working projects

Project name: CJK-D



- Source : G\_zjw00551, 《殷周金文集成引得》
- Mandarin: YOU4
- Meaning: A variant form of ‘祐’ U+7950; divine intervention, protection.

#### Annex S information

➤ 友 vs 友

Annex S indicates that a pair of CJK ideographs might be cognate when the only difference of actual shape is the component shown above.

拔拔 TJ  
629C 62D4

髮髮 TJ  
9AEA 9AEE

Example in S.1.5 (different actual shapes representing the same abstract shape)

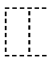
### Recommendation to IRG

Propose this character to CJK Unified Ideographs in accordance with non-cognate rule. The character was originally proposed to CJK Compatibility Characters, but the Japanese On ‘yū’ and the source from China of the exact match indicate that they are non-cognate.

---

### **Proposed character in IRG N1347R**

Source ID: J\_ARIB-757D

Glyph	ARIB ID	Compatibility equivalence	IDS	Code position in FPDAM5
舘	105	U+08218 舘	 舎官	U+FA6E

### Additional Information

KXI: 0120.111

Radical: 人(2F08)

Stroke: 14

1<sup>st</sup> seq: 1

Reading

- Japanese On: kan
- Japanese Kun: YAKATA, TACHI, TATE

### Related characters in existing UCS

Glyph	ucs	kxi	radical	stroke	firstseq
C T J K					
舘 舘 舘 舘	U+8218	1007.250	舌	10	1

Reading

- Japanese On: kan
- Japanese Kun: YAKATA, TACHI, TATE
- kMandarin GUAN3

Meaning

- kDefinition a mansion; a building

### Related characters in IRG working projects

(Not found)

#### Annex S information

➤ 𡗗 vs 𡗗

They are cognate as we can confirm from dictionaries. There's no explicit indication of the pair in Annex S but URO already unified the following.

Glyph				ucs
C	T	J	K	
捨	捨	捨	捨	U+6368

#### Recommendation to IRG

Propose this character to CJK Compatibility Ideographs with the identified CJK unified ideograph as its equivalent character.

---

(end of document)